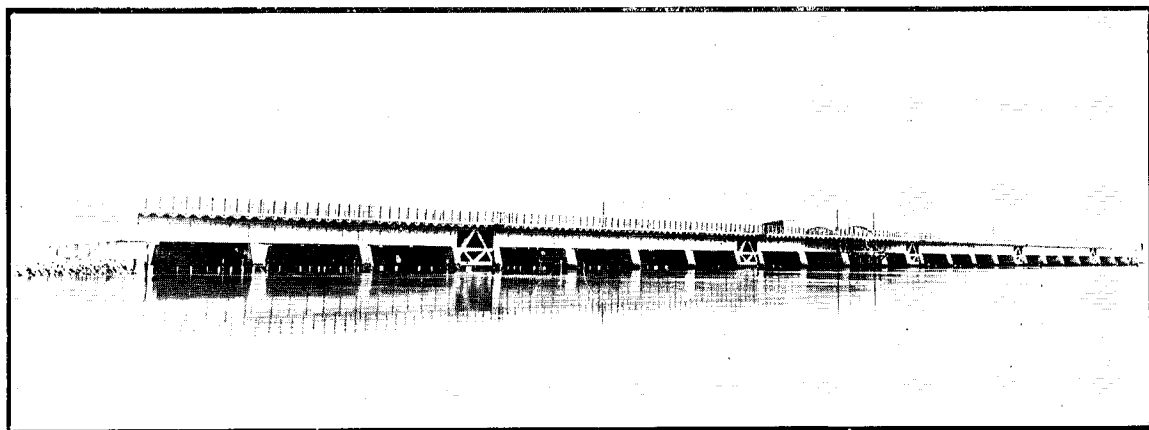
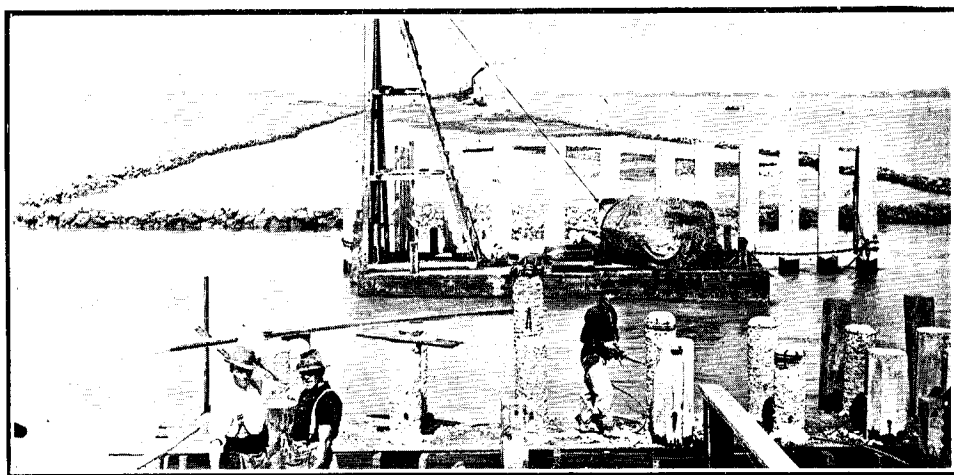


TE WERA QUARRY : CRUSHING AND SCREENING PLANT.



NAPIER-WAIROA RAILWAY. WESTSHORE BRIDGE : GENERAL VIEW.



NAPIER-WAIROA RAILWAY : WESTSHORE BRIDGE.

Stripping pile-heads by compressed air, also plant for driving temporary piles, and Harbour Board dredge in background.