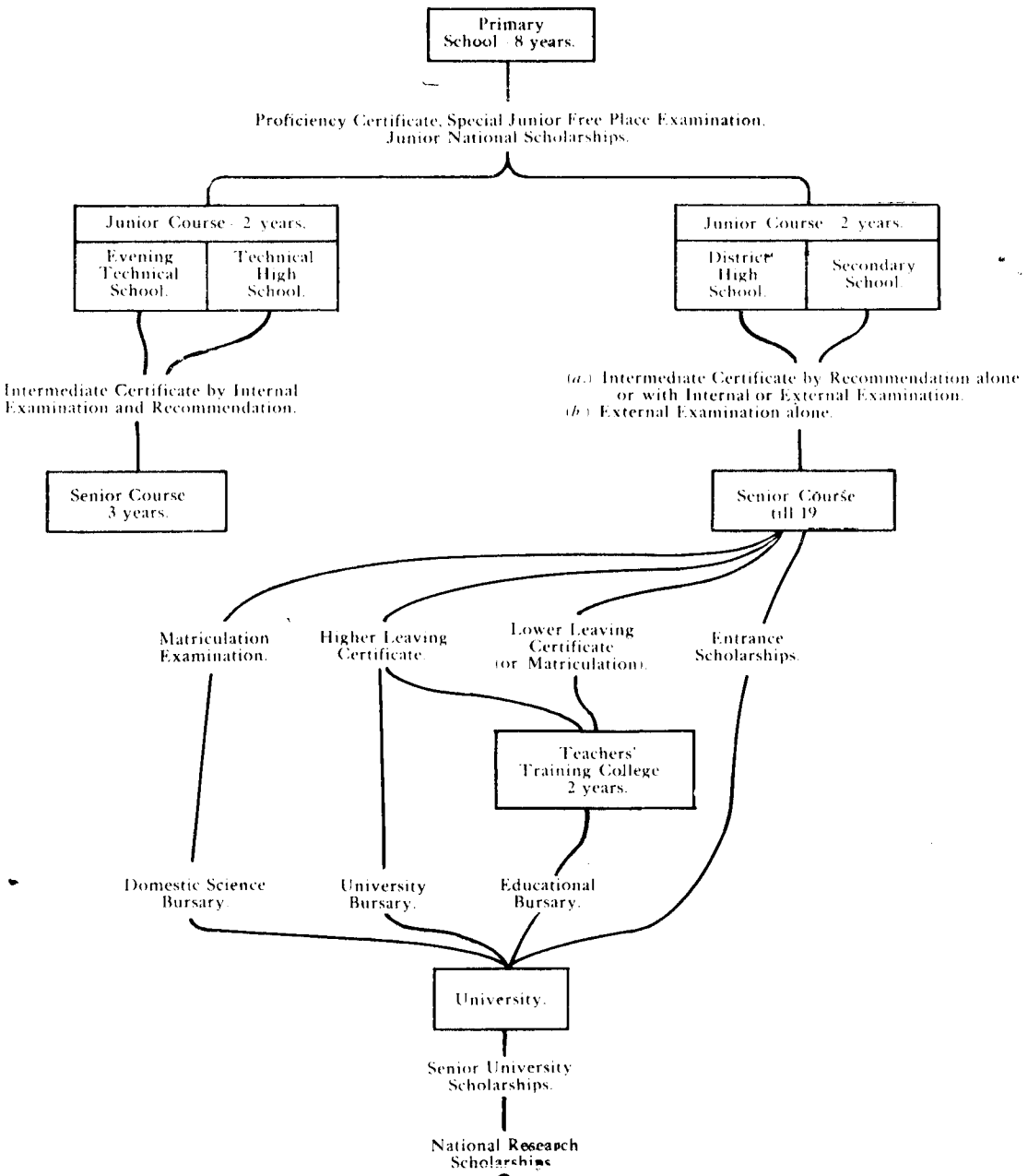


as well as of secondary, technical, and district high schools, to which such subsidies were previously confined. Kindergartens, classes for backward children, observation schools for the training of inexperienced country teachers, and visits of selected teachers to other countries also come within the purview of the Act.

CHART SHOWING GENERAL SCHEME OF FREE NATIONAL EDUCATION IN NEW ZEALAND AS PROVIDED BY THE EDUCATION ACT, 1914.



PRIMARY EDUCATION.

NUMBER OF PUBLIC SCHOOLS.

The number of public schools open at the end of 1914 was 2,301, as against 2,255 for the year 1913, an increase of 46.

In Table A below the schools are classified according to the yearly average attendance. In a number of cases schools maintained in grades under Schedule A of clause 2 of the Staffs and Salaries Regulations are included in this table in such grades, although the average attendance of these schools respectively for 1914 was below the minimum of the grades as indicated in Table A. The classification is in accordance with the provisions of the Education Amendment Act, 1908, which came into operation on the 1st January, 1909.