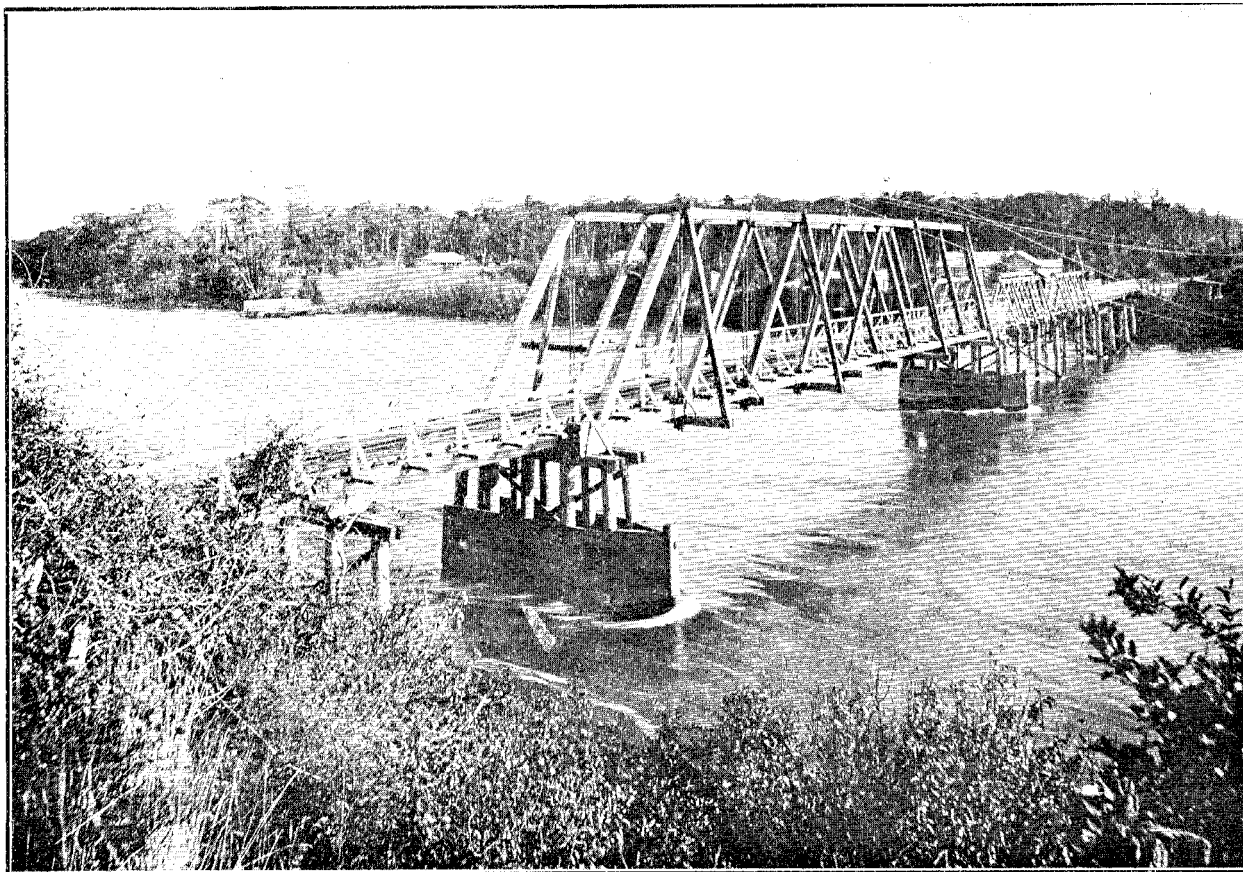


ROAD BRIDGE OVER HAPUKA RIVER, KAIKOURA COUNTY.

Six Spans of 100 ft. 6 in. Total Length, 603 ft. Width between Wheel guards, 12 ft. Cast-iron Cylinder Piers and Concrete Abutments. Superstructure of Mixed Australian Hardwoods.



TUATAPERE ROAD BRIDGE OVER WAIAU RIVER, WALLACE COUNTY, SOUTHLAND.

One Span of 151 ft., Two Spans of 61 ft. 3 in., and Six Spans of 30 ft. Total Length, 453 ft. 6 in. Width between Wheel-guards, 12 ft. Piers and One Abutment Ironbark Timber, One Abutment Concrete. Superstructure of Australian Hardwoods.