

and dressing, a second story, reached by a spiral staircase, has been built above the aisle where the showers are provided. The pin-stands are set lengthways down the building, and light and air are obtained through large windows in the wall opposite the washing side.

Other Installations.—At another colliery in Westphalia there are similar arrangements, accommodation being provided for 2,000 men in three shifts. The building measures about 132 ft. by 51 ft., and there are fifty-four showers, all placed on one side; the pin-stands are set lengthways down the building.

In Belgium an excellent installation of baths is to be seen at one of the pits of the Monceau Fontaine Company, near Charleroi.

At the Quesnoy Pit of the Bois du Luc Company, Belgium, the bathing installation comprises two separate buildings, one for washing and the other for dressing, communicating with each other by a short passage. About 500 men are at present using the establishment, and the bathing hall is 69 ft. long, 46 ft. wide, and 23 ft. high. There are eighty showers, arranged in sets of ten, from eight branch-pipes, each pipe being about 15 ft. in length, and carried out from the side walls in a direction parallel to the width of the building. From the branch-pipe five short

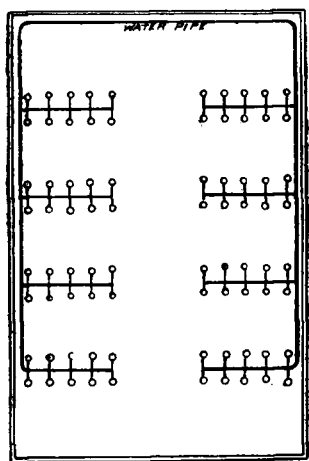


FIG. 9.—SKETCH-PLAN OF BATH-ROOM, SHOWING ARRANGEMENT FOR EIGHTY SHOWERS.

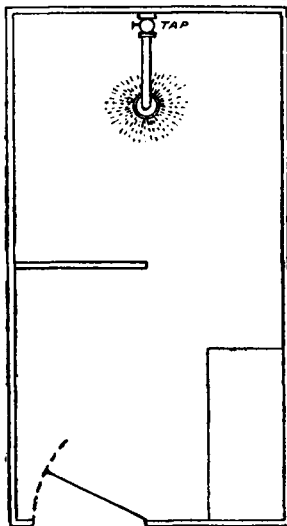


FIG. 10.—BATHING-CABIN WITH DOOR.

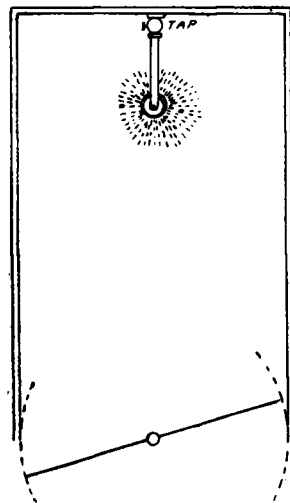


FIG. 11.—BATHING-CABIN WITH WOODEN SWING DOOR.

pipes, each about 2 ft. in length, project at right angles on either side, terminating in the roses for the showers. The eighty cabins (Fig. 10) are made of painted sheet iron, and are grouped in sets of ten, one to each shower. The dressing-hall is 75 ft. long, 46 ft. wide, and 41 ft. high. The suspender-pins are fixed along the side walls, and it is considered that there is room for 1,000. Twelve wooden benches are arranged about the hall.

Mr. Kuss gives the cost of this installation as follows:—

	Dressing-hall. Francs.	Washing-hall. Francs.	Total. Francs.
Ground	1,785	1,765	3,550
Buildings	26,000	25,600	51,600
Fittings	7,078	17,548	24,626
	34,863	44,913	79,776
	(£1,395)	(£1,796)	(£3,191)

This total sum of £3,191 is the first cost of this installation of eighty showers and 800 suspenders, equal to about £4 per suspender or per man using the baths. Mr. Kuss considers that £4 to £4 16s. (100 to 120 fcs.) per suspender is the average cost of a new installation of any importance in Belgium.

At one of the newest collieries (Fosse No. 13 of the Lens Company, Pas-de-Calais) an installation of baths has been recently carried out. A fine brick building, well lighted and ventilated by large glass windows running continuously along its two sides in the upper half of the walls, is provided. It is 78·7 ft. long, 36 ft. wide, and 21 ft. high to the top of the wall, the total height to the roof-ridge being 33 ft. The building provides for 650 men in two shifts, there being 650 suspenders and fifty-six showers; the latter are placed around the walls of the building, with a separate cabin for each shower.

The cabins of white glazed bricks (Fig. 11) are 39½ ft. wide, 5 ft. long, and 6½ ft. high, with no separate compartment. The entrance to each cabin is provided with a wooden door, arranged so as to turn easily around its central vertical axis on pivots fixed above and below. To one side of the door are fixed four hooks for hanging clothes, which can thus be turned outside to avoid getting them wet when the bather is washing, and inside when he wants them. The central portion of the building is used for changing the upper garments, and for keeping and drying the clothes that are left, in the manner already described. It is evident that the number of showers provided must depend upon the largest number of men coming out in one shift, and on the time which they take to come out, as a man cannot be expected to wait for his bath very long. The number of suspenders must equal the total number of men using the establishment.