

Abstract of Horizontal Angles at Arawaru Geodetic Station.
Rangitumau and Mount Dundas.

No.	Page.	Angle.			v.
		°	'	"	
1	27	45	58	30.00	+ 1.05
2	27	45	58	31.66	+ 2.71
3	29	45	58	31.66	+ 2.71
4	29	45	58	26.66	- 2.29
5	30	45	58	26.66	- 2.29
6	30	45	58	28.33	- 0.62
7	31	45	58	27.50	- 1.45
8	31	45	58	29.16	+ 0.21
8 231.63					+ 6.68
					- 6.65
45 58 28.95					

The alterations in the length of the Wairarapa base-line have made necessary a recalculation of the triangle from the auxiliary base; and in this connection the opportunity was taken to include the whole of the observations of the angles, leading to slight alterations in them. The result of the recalculation shows that the direct measurement from IX to Bidwill differs only 0.0061 links from the calculated distance (see Fig. 1).

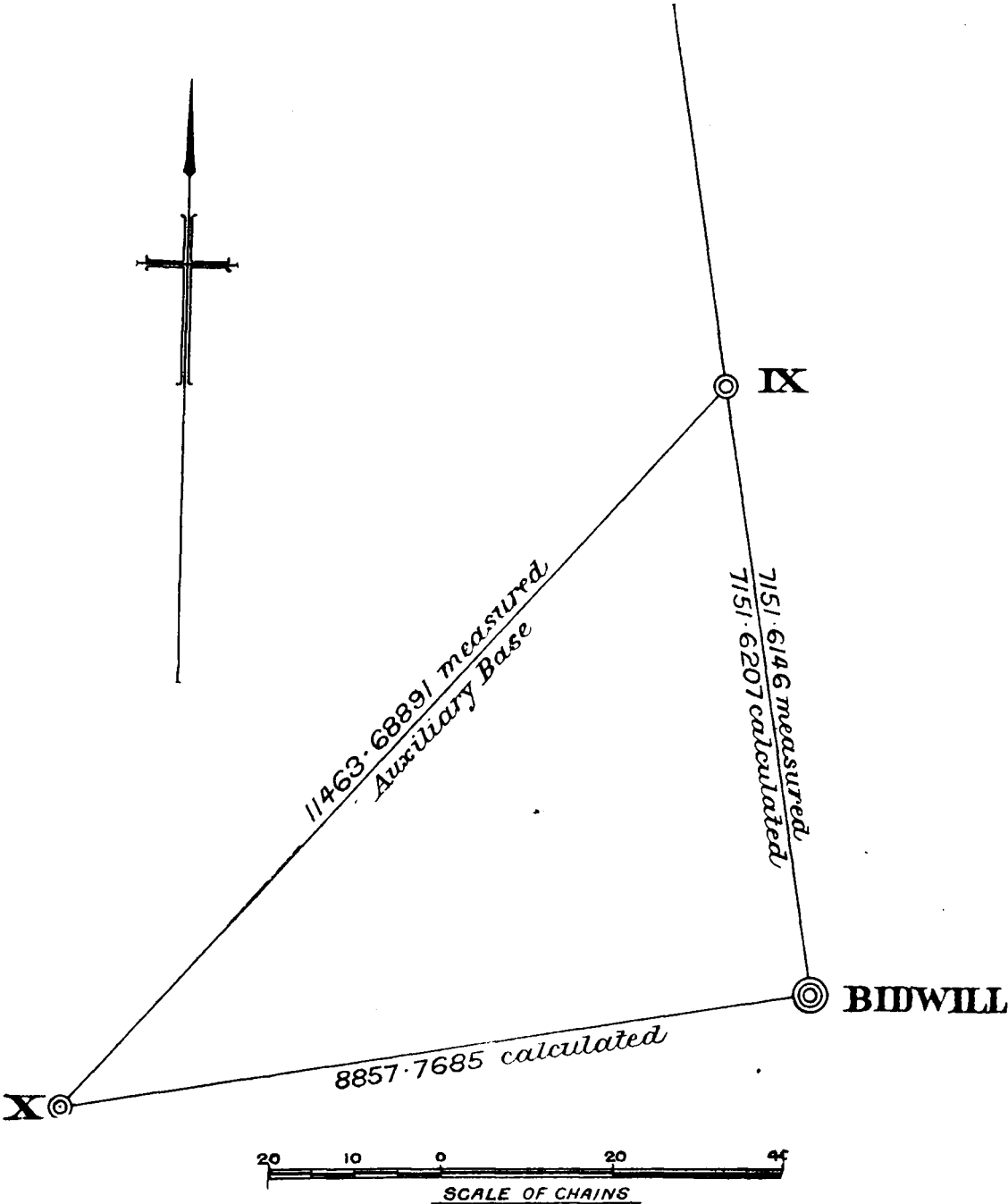


Fig. 1.