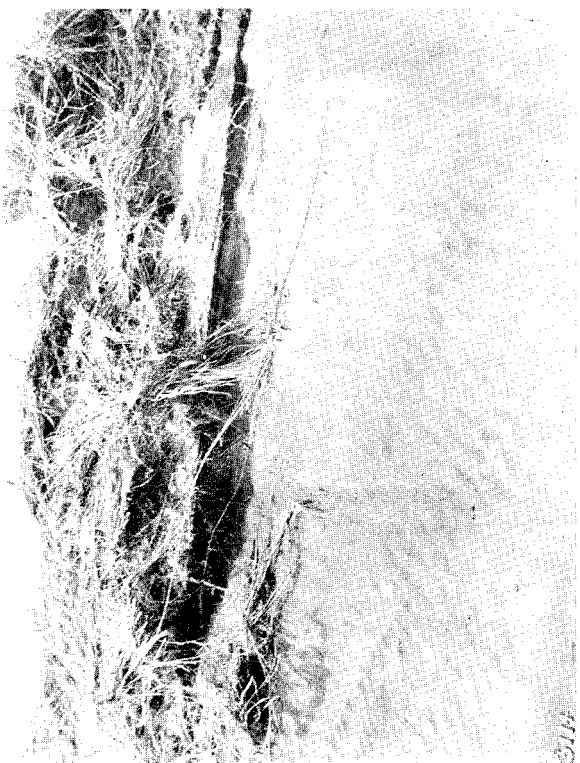


No. 22. BASE OF COASTAL CLIFF, PATEA. PORTION OF UNDER-CLIFF DUNE ON RIGHT, AND ASCENT OF SAND BY GULLY TO SUMMIT OF CLIFF.



No. 24. FIRST STAGE IN HISTORY OF A WANDERING DUNE: HOLE MADE BY SHEEP. 5 BY 4 CAMERA-CASE FOR SCALE.



No. 21. A PLANTING OF MARRAM-GRASS WHICH HAD SUCCEEDED WELL BEING NOW UNDERMINED ON ITS WINDWARD SIDE.



No. 23. DUNE NATURALLY FIXED REVERTING TO THE ACTIVE STAGE AT SUMMIT. SHRUBS IN FRONT CHIEFLY *Cassinia leptophylla*.