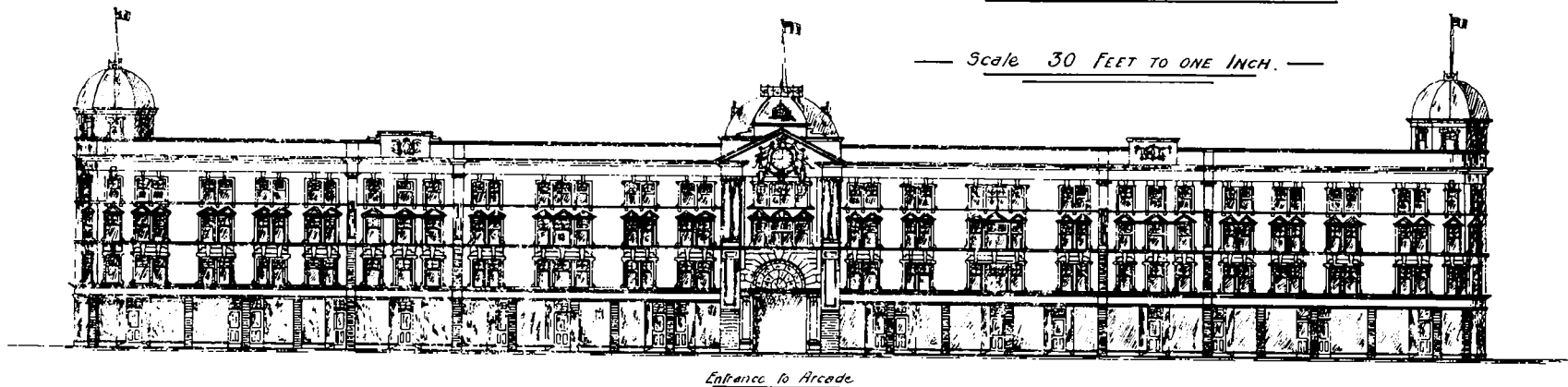


*SITE OF EXISTING GOVT DEPARTMENTAL BUILDINGS.
LAMBTON QUAY.*

Plan B.

PLAN showing how site may be utilised for the erection
of Shops, Warehouses or Offices.

— Scale 30 FEET TO ONE INCH. —

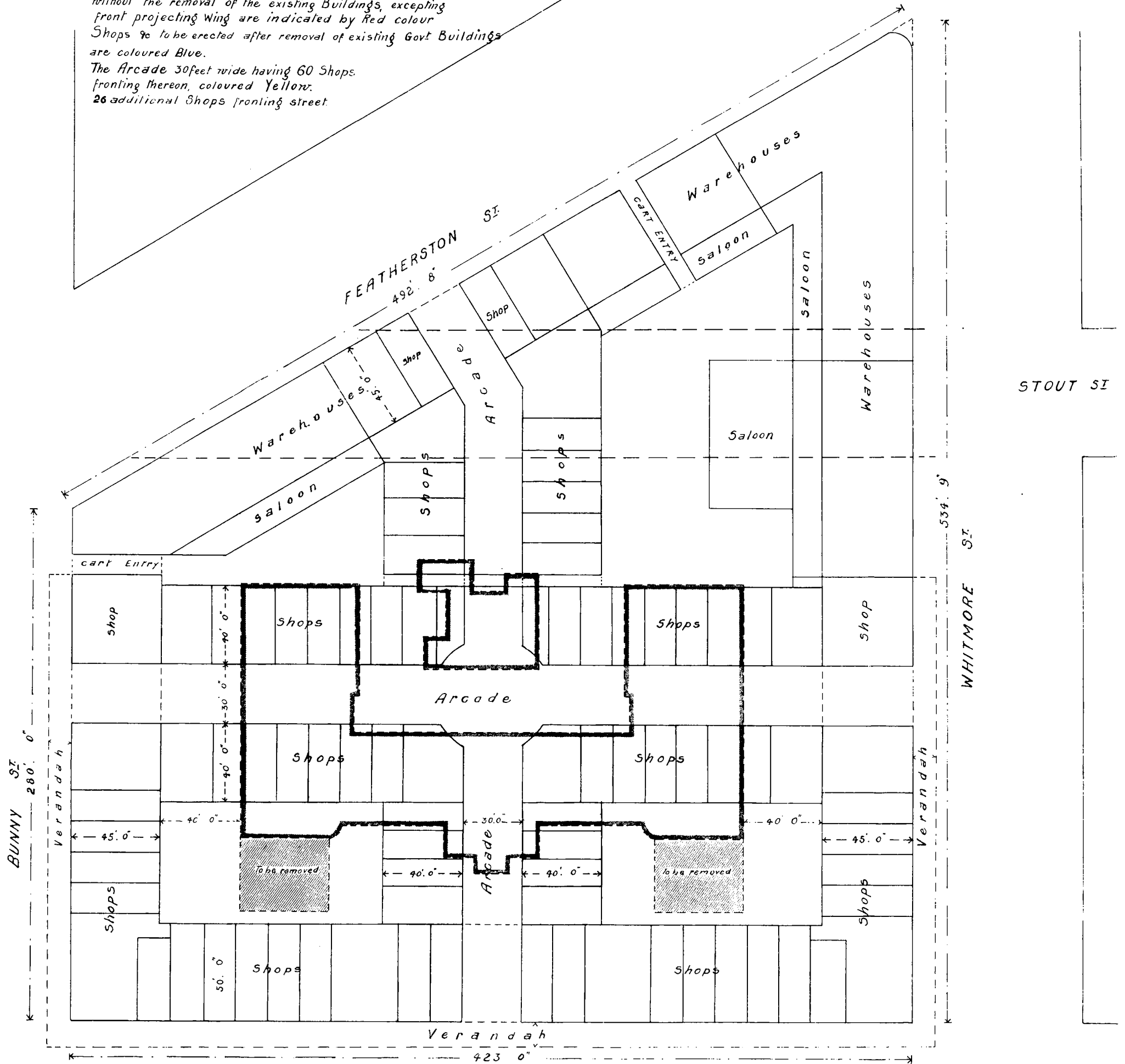
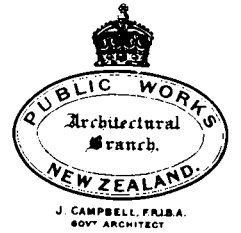


ELEVATION - TO LAMBTON - QUAY.

EXPLANATION NOTES.

The existing Govt Buildings are indicated by dark outline.
New Shops Warehouse or Office buildings which may be erected
without the removal of the existing Buildings, excepting
front projecting wing are indicated by Red colour.
Shops to be erected after removal of existing Govt Buildings
are coloured Blue.

The Arcade 30 feet wide having 60 Shops
fronting thereon, coloured Yellow.
26 additional Shops fronting street.



LAMBTON QUAY.

BY AUTHORITY JOHN MACKAY GOVERNMENT PRINTER