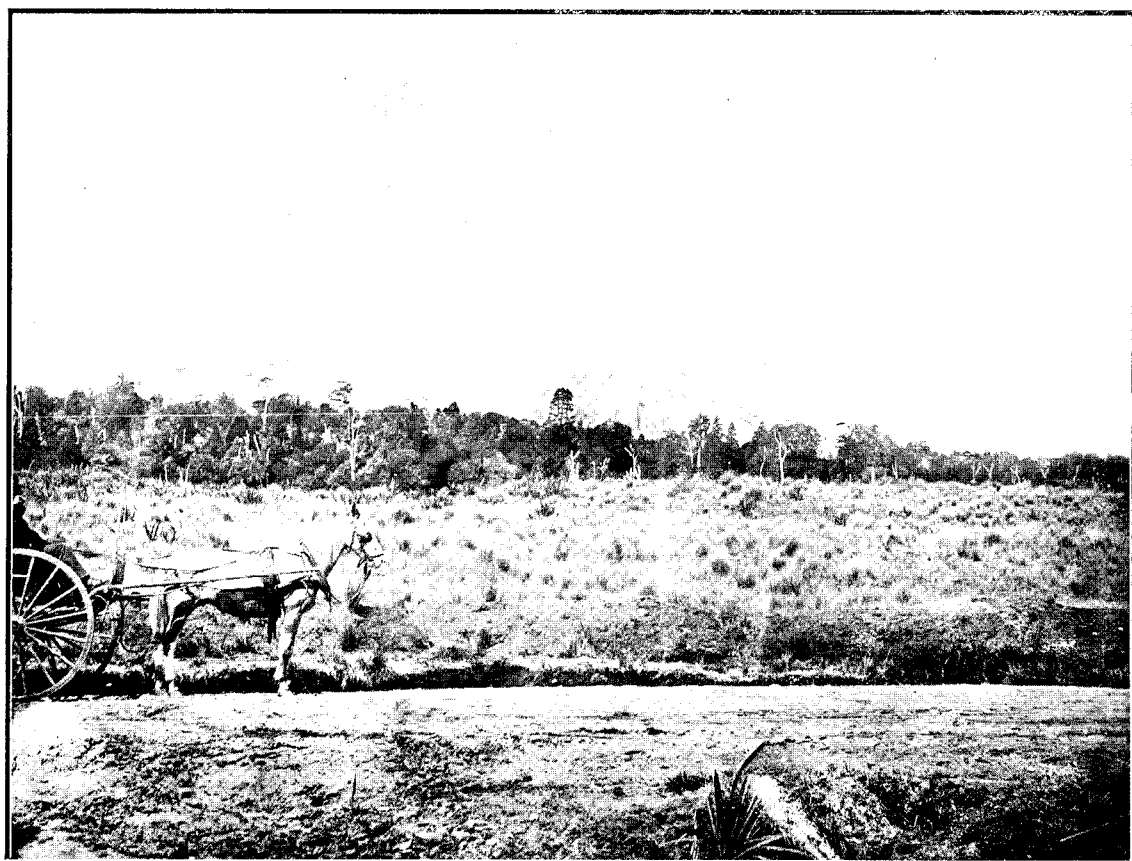


ALONG THE ROUTE OF THE NORTH ISLAND MAIN TRUNK RAILWAY: TURANGABERE WATERFALL.

[Lands Dept., photo.]



ALONG THE ROUTE OF THE NORTH ISLAND MAIN TRUNK RAILWAY: APPROACHING OHAKUNE.

[Tibbitt Bros., photo.]