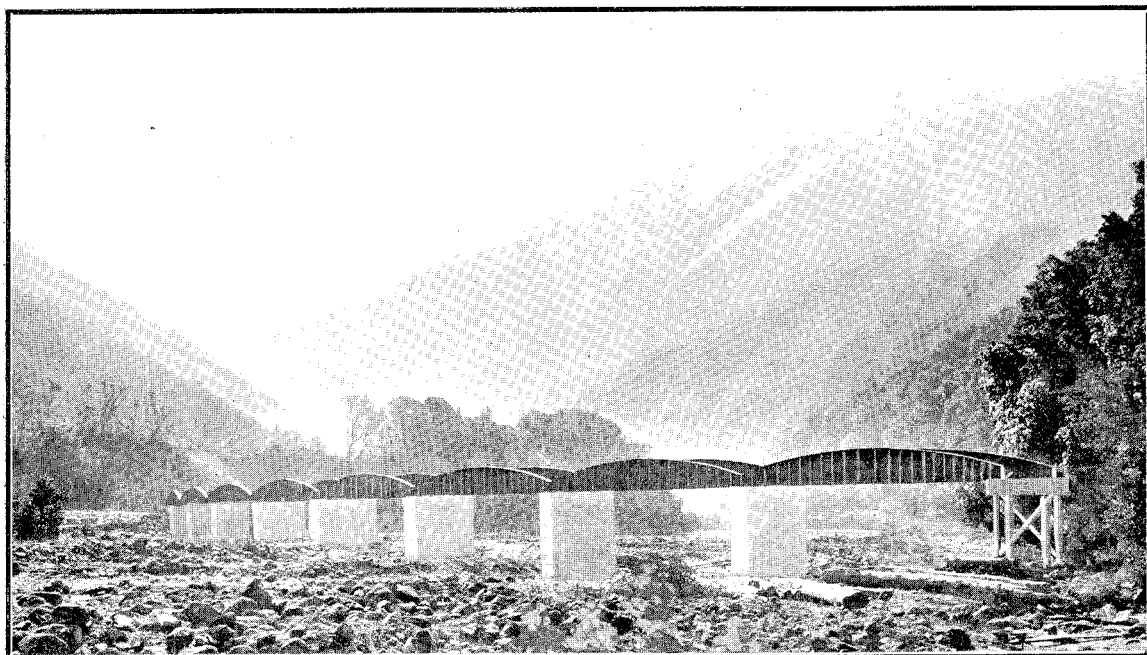


NEW ZEALAND MIDLAND RAILWAY.—VIEW AT BROKEN RIVER STATION YARD, LOOKING TOWARDS SPRINGFIELD, SHOWING BROKEN RIVER BRIDGE, ROCKY CREEK BRIDGE, AND NO. 9 TUNNEL IN THE DISTANCE.



NEW ZEALAND MIDLAND RAILWAY, ARTHUR'S PASS SECTION.—BRIDGE OVER ROLLESTON RIVER. (EIGHT SPANS OF 60 FT., ON CONCRETE PIERS.) VIEW LOOKING TOWARDS OTIRA.