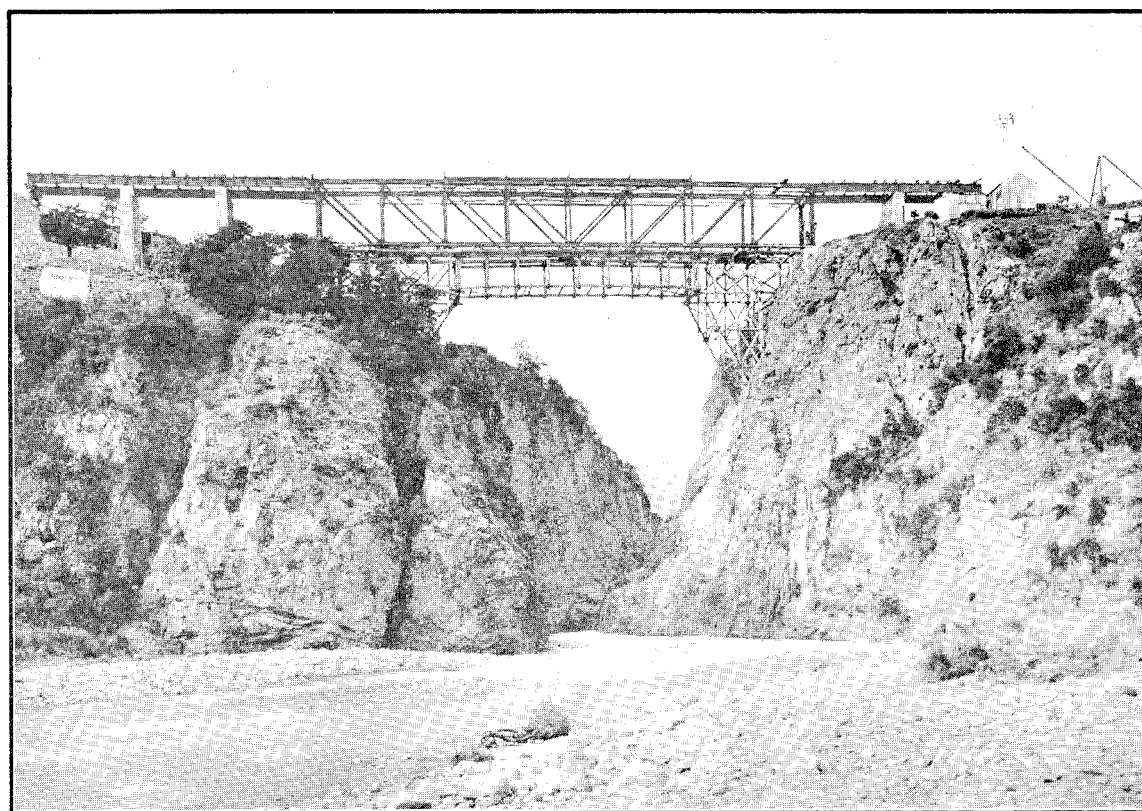




NEW ZEALAND MIDLAND RAILWAY. — BRIDGE OVER ROCKY CREEK, AT 11 M. 61 CH. FROM SPRINGFIELD.
(THREE SPANS OF 44 FT., ON CONCRETE PIERS 66 FT. HIGH.)



NEW ZEALAND MIDLAND RAILWAY. — BRIDGE OVER BROKEN RIVER AT 12 M. 5 CH. FROM SPRINGFIELD,
SHOWING TEMPORARY STAGING USED DURING ERECTION. (TWO SPANS OF 20 FT., SIX OF 36 FT.,
AND ONE OF 192 FT.; CREEK-BED TO RAIL-LEVEL, 185 FT.)