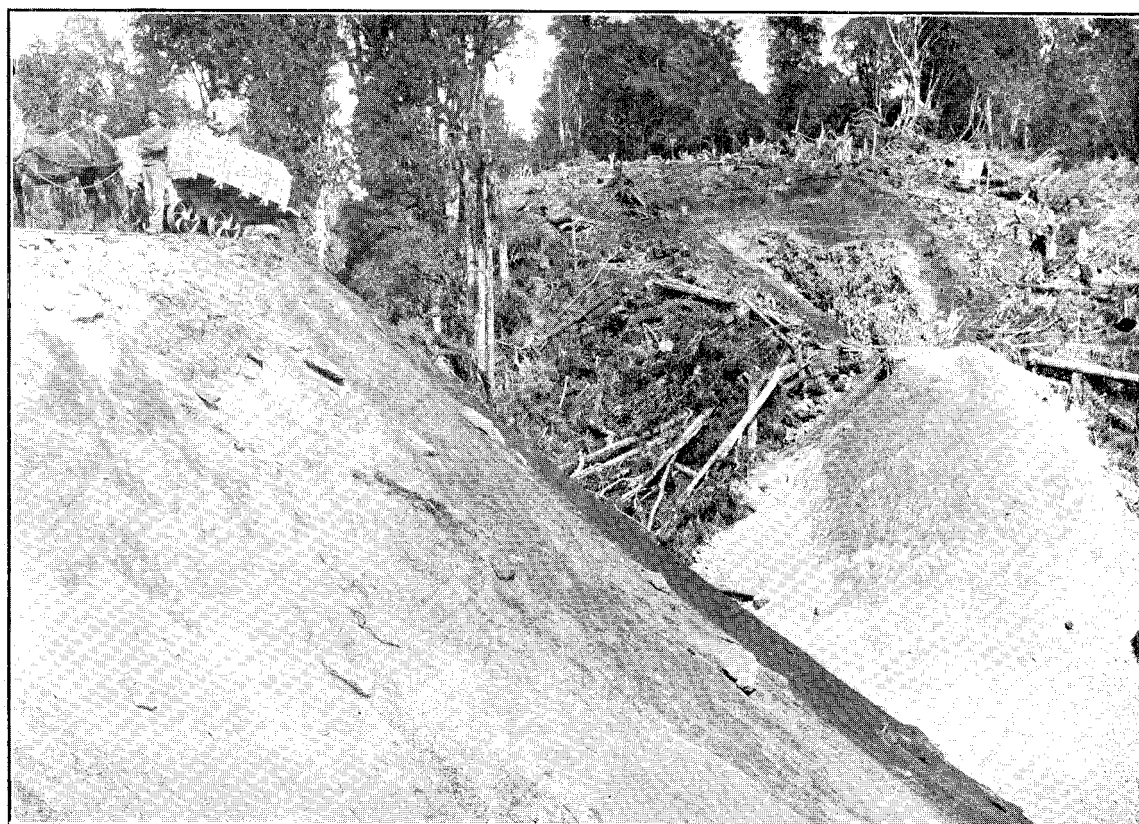


NORTH ISLAND MAIN TRUNK RAILWAY.—WATER-TUNNEL TO CARRY WAIKAKARIKI STREAM,  
AT 115 M. 47 CH.



NORTH ISLAND MAIN TRUNK RAILWAY.—BANK AT 109 M. 75 CH. FROM MARTON JUNCTION  
(110 FT. HIGH.)