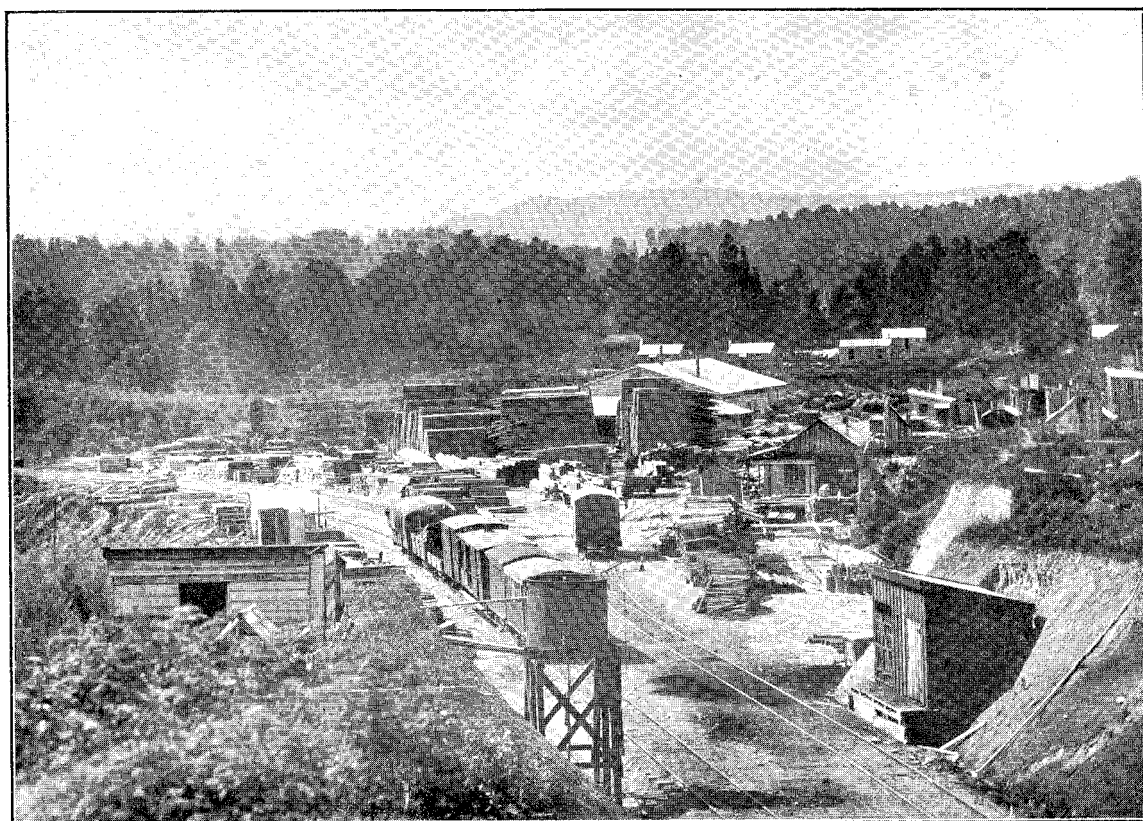


NORTH ISLAND MAIN TRUNK RAILWAY.—COMBINED ROAD AND RAILWAY BRIDGE OVER WANGANUI RIVER, NEAR TAUMARUNUI. (THREE SPANS OF 122 FT. AND FIVE OF 20 FT.)



NORTH ISLAND MAIN TRUNK RAILWAY.—KAKAHI SAWMILL, AT 125 M. 73 CH. FROM MARTON JUNCTION.