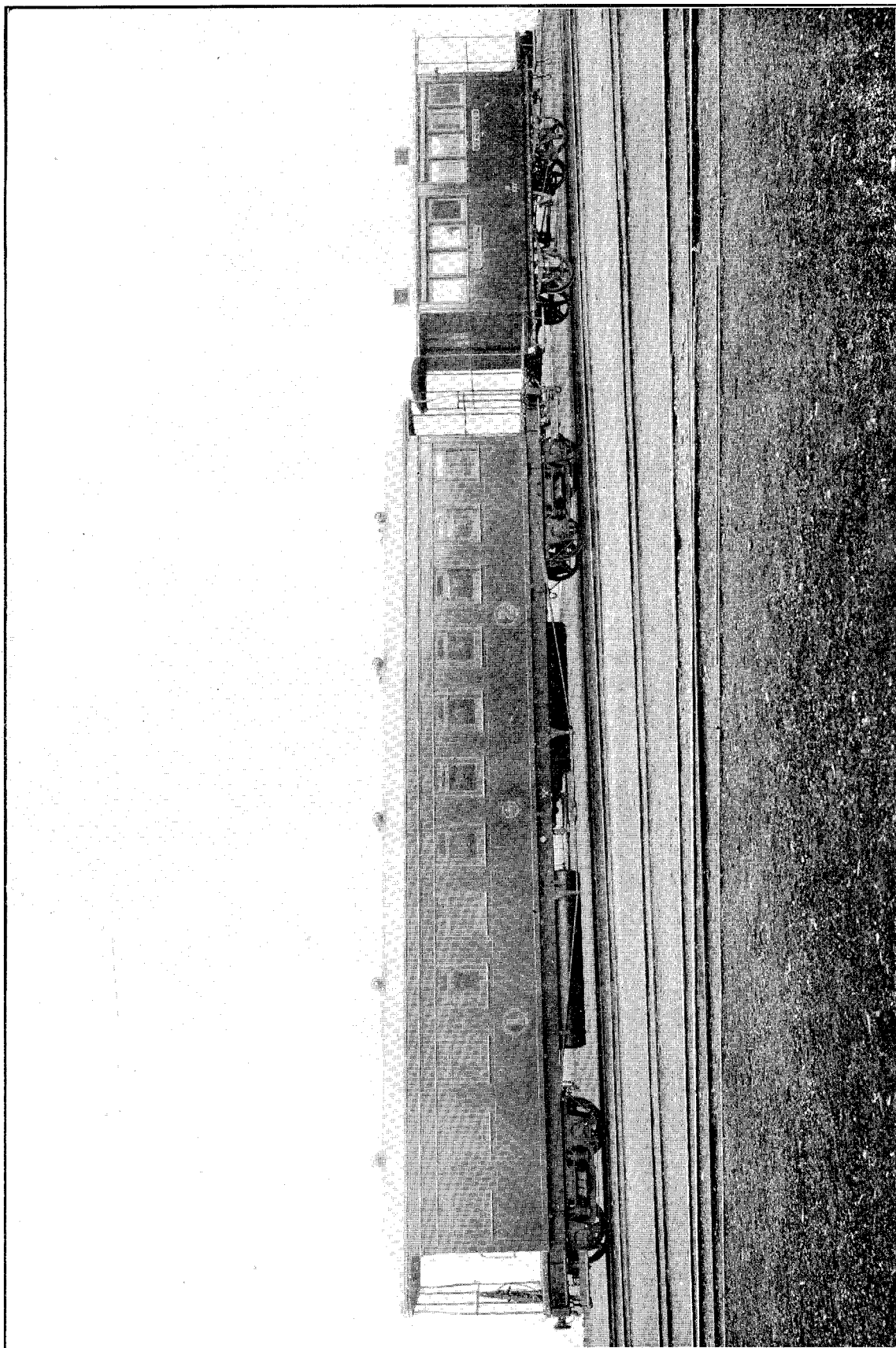


1904.
Standard Class "A" Bogie Car.
47½ ft. over headstocks; floor area
284 sq. ft. Pintsoh gas-
lighting. Westinghouse Brake.



Passenger Cars, Present and Past, built in New Zealand Government Railway Workshops. Gauge. 3 ft. 6 in.

1874.
Class "D" Car
20 ft. over headstocks; floor area
90 sq. ft. Colza-oil lighting
Hand-brake.