

PHOTO LITHOGRAPHED BY H. H. GILES, LANDS & SURVEY DEPT. WELLINGTON, N.Z. (1905).

Inch Valley Lime-works—From Engine-shed, showing Top of Kiln and general View of Railway.

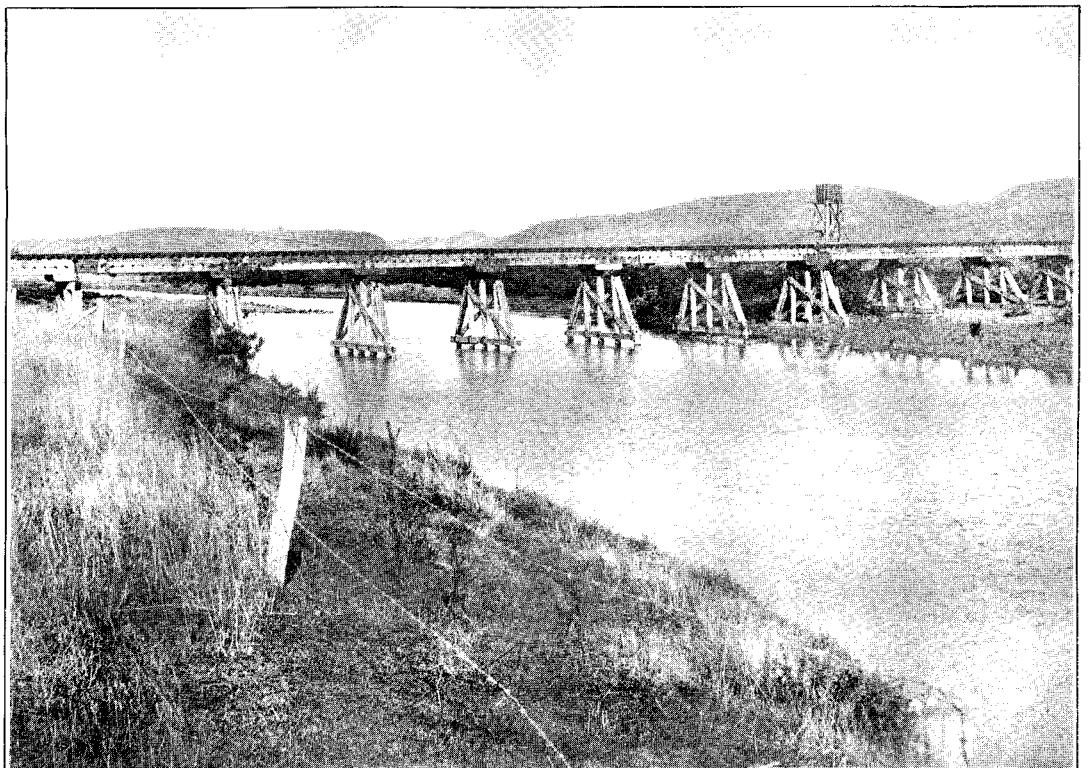


PHOTO LITHOGRAPHED BY H. H. GILES, LANDS & SURVEY DEPT. WELLINGTON, N.Z. (1905).

Inch Valley Lime-works—First Railway-bridge over Waihemo or Shag River.