

PHOTO LITHOGRAPHED AT HEAD OFFICE LANDS & SURVEY DEPT. WELLINGTON, N.Z. 1906.

Inch Valley Lime-works—Railway from First Bridge to Limestone Rocks.

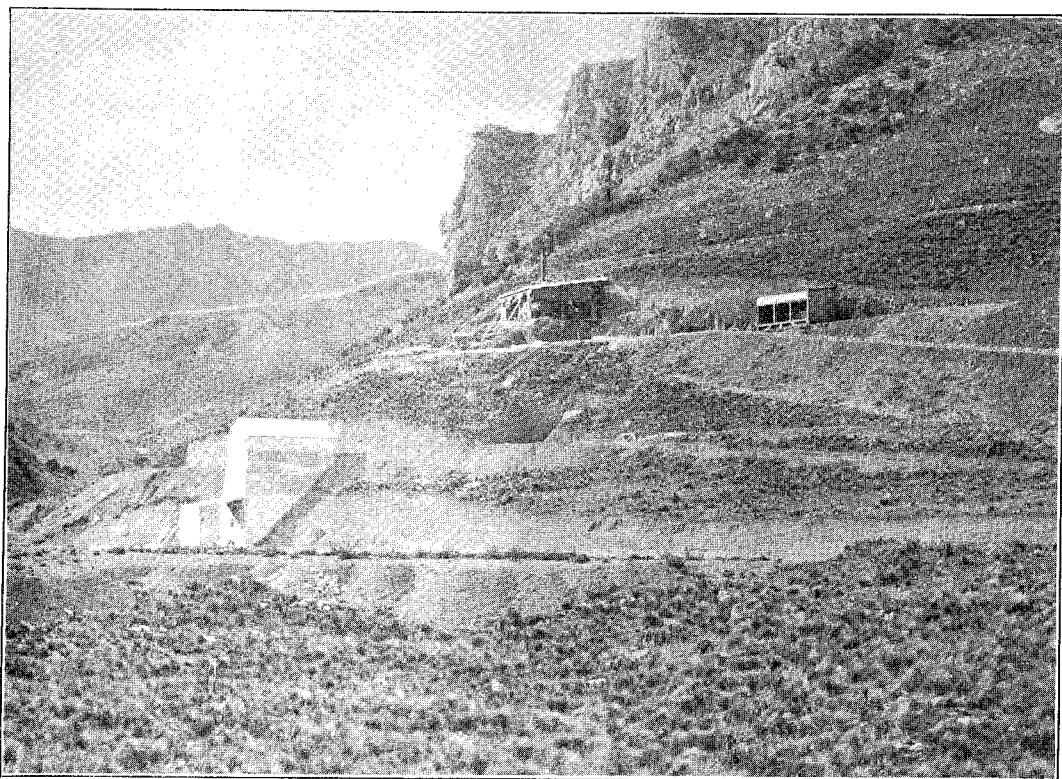


PHOTO LITHOGRAPHED AT HEAD OFFICE LANDS & SURVEY DEPT. WELLINGTON, N.Z. 1906.

Inch Valley Lime-works—General View of Limestone Rocks, Kilns, Works, &c.