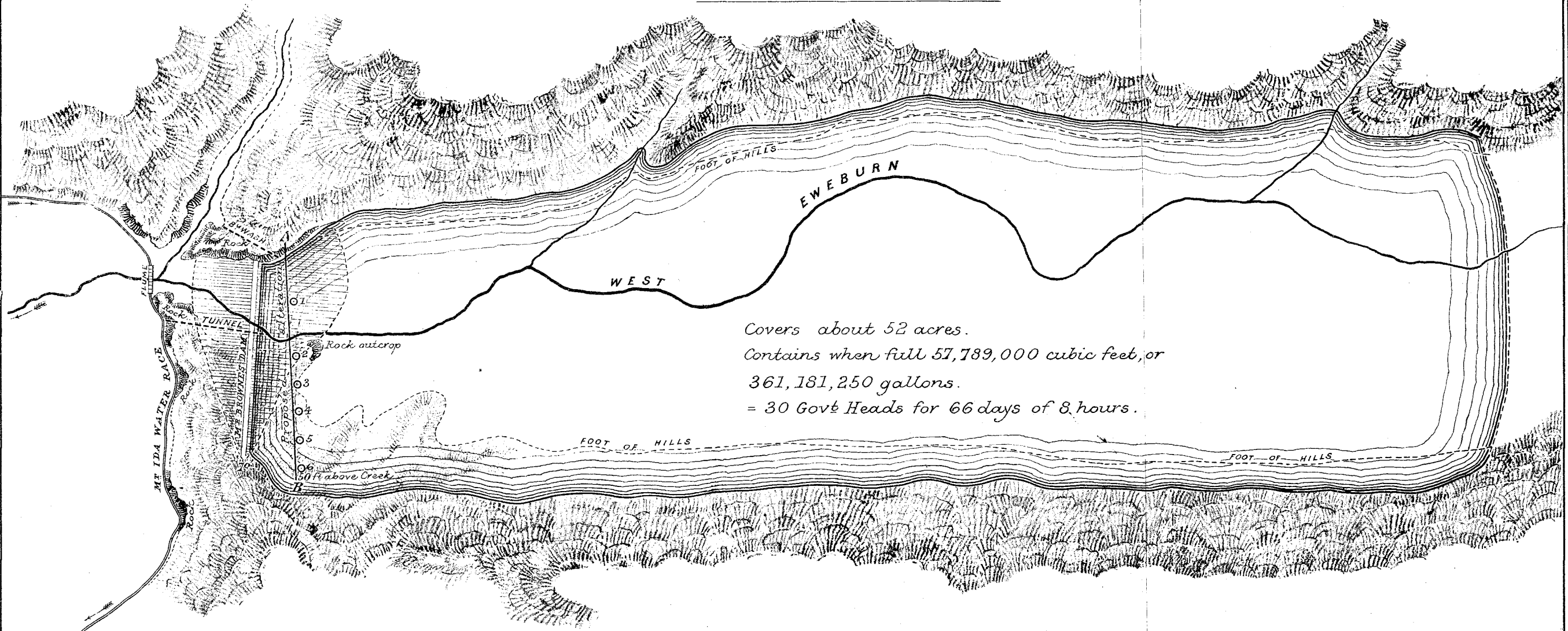


SKETCH PLAN  
OF PROPOSED  
EWEBURN RESERVOIR.

To accompany Report by T. Perham. A.M.Inst.C.E.

Scale 4 Chains to an Inch.



Covers about 52 acres.  
Contains when full 57,789,000 cubic feet, or  
361,181,250 gallons.  
= 30 Govt Heads for 66 days of 8 hours.

0 1. 2. 3. 4. 5. 6. Positions of borings to be taken on line A.B.