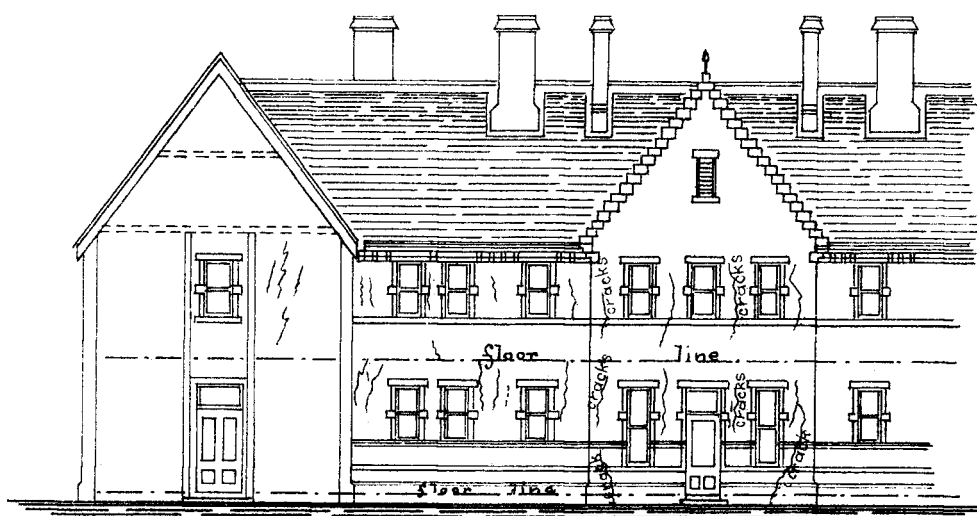


SEACLIFF LUNATIC ASYLUM

— SCALE 20 FEET = 1 INCH —



— BACK ELEVATION —

SKETCH SHEWING CRACKS THAT OCCURRED IN 1884.

Note! This represents the cracks as they appeared on the 17th Feb: 1885, but they had increased very little if anything since the winter of 1884.

S^d. E.R.Ussher.

18.2.88.

NO 27