

# RETURN

TO

AN ORDER OF THE HOUSE OF REPRESENTATIVES,  
*No. 29, 23rd June, 1869.*

FOR A

# MAP OF THE NORTH ISLAND,

SHOWING the distribution of the various Tribes; the nature of the country, whether covered with bush or open; what lands are known or supposed to be auriferous; names of places where our Forces are stationed. Showing also the several Blocks of Confiscated Land within each Province; the total area of the same; the quantities sold, and purchase moneys received, to the present date; the portions appropriated in each case for the Natives (loyal or otherwise), for Military Settlers, for future Sale, or as Reserves for Public Purposes. Also, as far as may be practicable, the present numbers and distribution of Military or other Settlers on the Confiscated Lands, and of the Native Tribes to which such Lands originally belonged. That the Map referred to do also contain, if possible, a sketch of the main geographical and topographical features of the Waikare-Moana country, and its connection with the East and West Coasts."

*(Mr. Graham.)*

WELLINGTON.

—  
1870.

MEMORANDUM

MEMORANDUM FOR THE RECORD

---

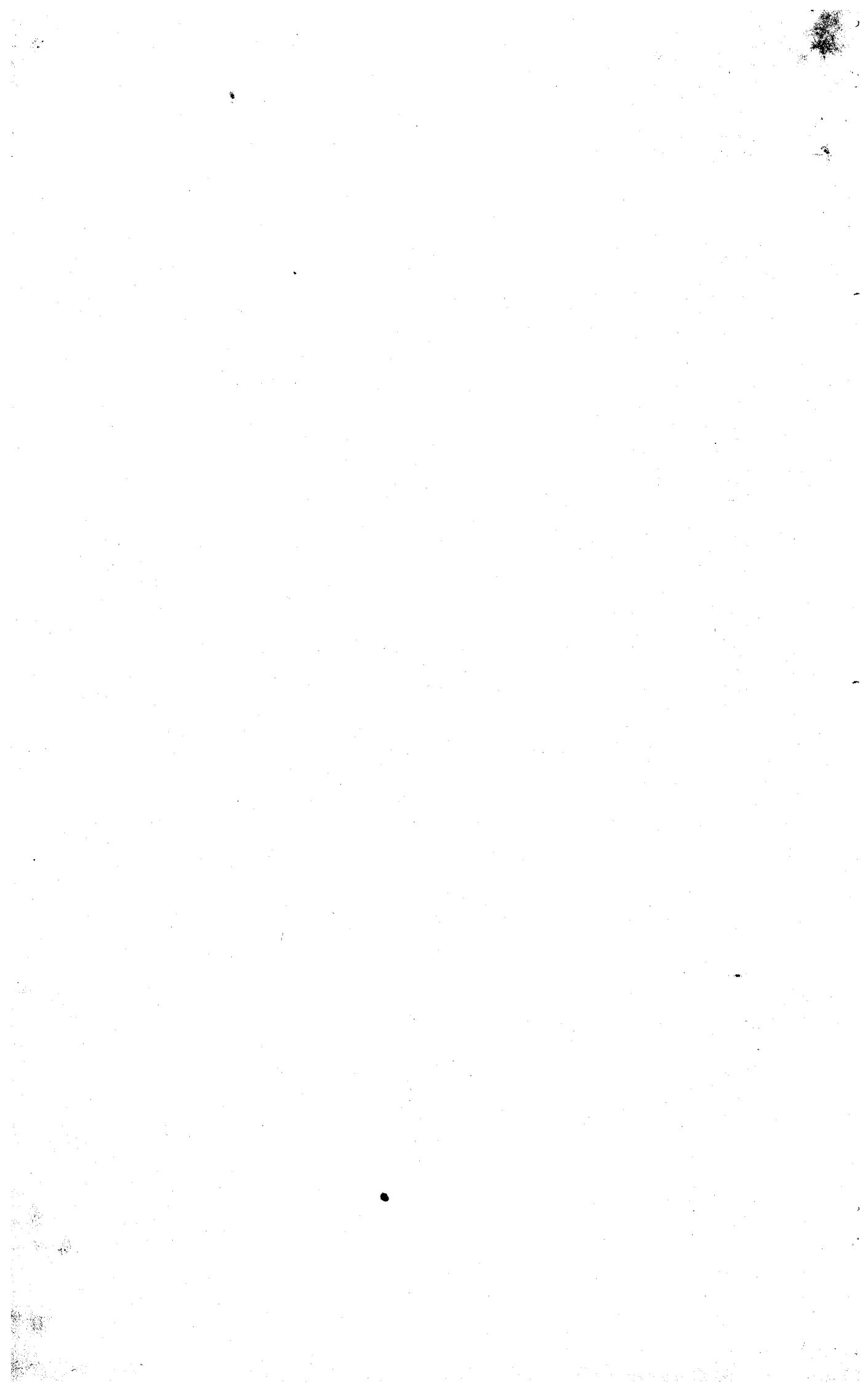
Approximate Cost of Preparation	...	...	...	...	...	£189 17s. 6d.
---------------------------------	-----	-----	-----	-----	-----	---------------

---

RETURN showing the Quantity of Confiscated Land Sold and Purchase Money received; portions appropriated for Natives, for Military Settlers, for future Sale, or for Public Reserves; also, Number and Distribution of Military or other Settlers, and of Native Tribes to which such Lands originally belonged,—to 31st May, 1869.

Locality.	Quantity Sold.			Purchase Money received in Cash or Serv.			Appropriated to Natives.		For future Sale.	Public Reserves.	Number of Military or other Settlers.				Total Area Appropriated.	Name and Number of Tribe to whom the Land originally belonged.				
	Acres.	R. P.	£ s. d.	Loyal.	Acres.	Otherwise.	Military Settlers.				Other Settlers.		Total Settlers.	Acres.						
							Males.	Females.			Males.	Females.					Total.	Area Appropriated.	Name.	Number.
WAIKATO ...	124,891	1 11	71,756 8 11	221,979	35,000	553,744½	22,624	724	531	1,255	214,884	26,171	287	92	195†	1,542	241,055	Waikato ...	...	
Between AUCKLAND and WAIKATO RIVER	4,055	0 0	4,108 12 1	*	*	*	*	*	*	*	*	*	1,271½	...	1,271†	10,906½	10,906½	Waikato ...	...	
TAURANGA ...	1,485	2 7	6,560 2 8	9,822	2,616	89,228½	20,000	149	97	246	26,701	...	11	4	7	257	26,701	Ngaiterangi Ngaimaru Ngaitamatera Tawera ...	...	
OPOTKI ...	24	3 5	343 12 6	70,230	100,751	160,122½	10,000	113	49	162	30,485	...	23	12	11	185	30,485	Ngatiawa Te Urewera Whakatohea Whanauapanui	...	
TARANAKI, between PUKARUHE and HANGATAHUA ...	1,189	3 22	5,473 17 6	77,003	1,062	†	674	92	41	133	48,856	...	73	30	43	...	43,856	Ngatiawa ... Part of Tara-naki Tribe ...	1,035 200	
Between HANGATAHUA and WAITOTARA ...	10	0 0	...	83,864	32,304	†	14,133	585	...	585	51,964	*	*	*	*	585	51,964	Part of Tara-naki Tribe ... Ngaruahine ... Tangahoe ... Pakakohi ... Ngaruru ... Ngatihineuru Ngatikahun-gunu ...	300 400 220 200	
HAWKE'S BAY ...	Nil	Nil	Nil	100,000	50,000	60,000	3,560	Nil	Nil	Nil	Nil	Nil	Nil	Nil	Nil	Nil	Nil	Nil	Ngatikahun-gunu ...	...

\* No Return. † These are Immigrants located by General Government, and do not include those persons who have purchased lands and settled thereon. ‡ Not determined.



# SKETCH MAP OF THE NORTH ISLAND, OF NEW ZEALAND.

Shewing,  
Native Tribal Boundaries, Topographical Features,  
Confiscated Lands, Military & Police Stations, &c.  
1869.

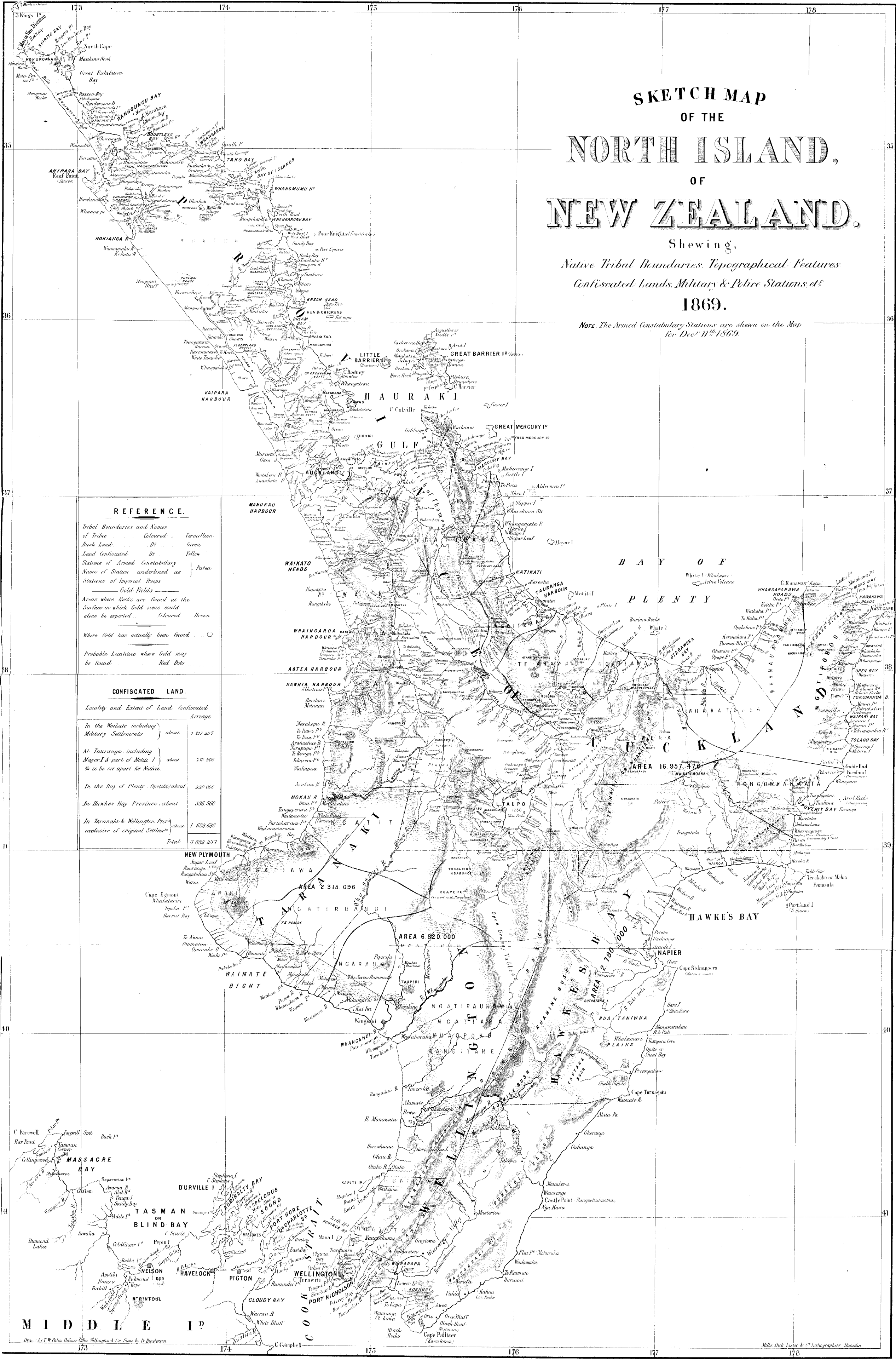
Note: The Armed Constabulary Stations are shown on the Map for Decr. 11<sup>th</sup> 1869.

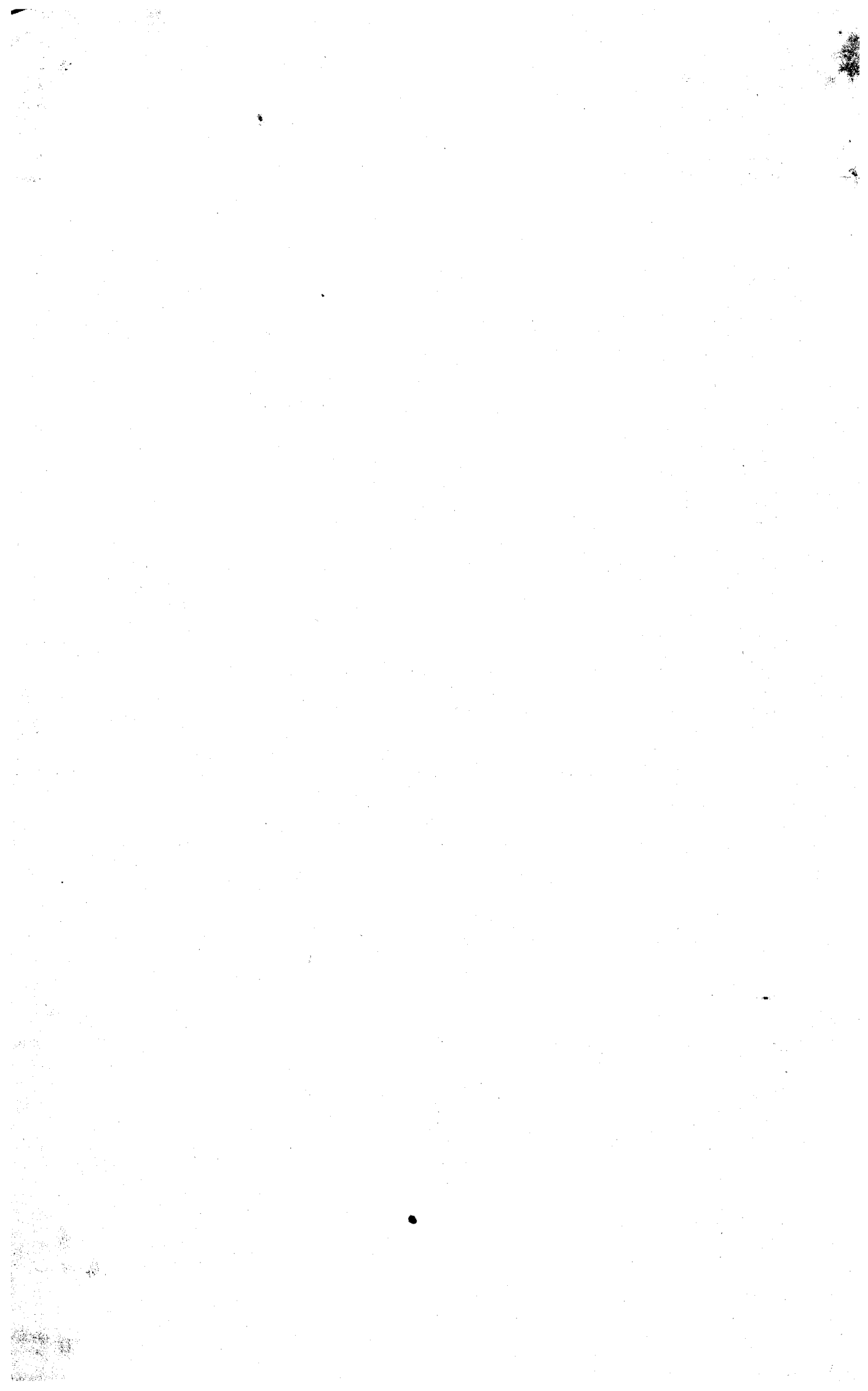
### REFERENCE.

Tribal Boundaries and Names of Tribes Coloured  
Bush Land D<sup>r</sup> Green  
Land Confiscated D<sup>r</sup> Yellow  
Stations of Armed Constabulary Name of Station underlined as Stations of Imperial Troops  
Gold Fields Gold Fields  
Areas where rocks are found at the surface in which Gold veins could alone be expected Coloured Brown  
Where Gold has actually been found  
Probable Locations where Gold may be found Red Dots

### CONFISCATED LAND.

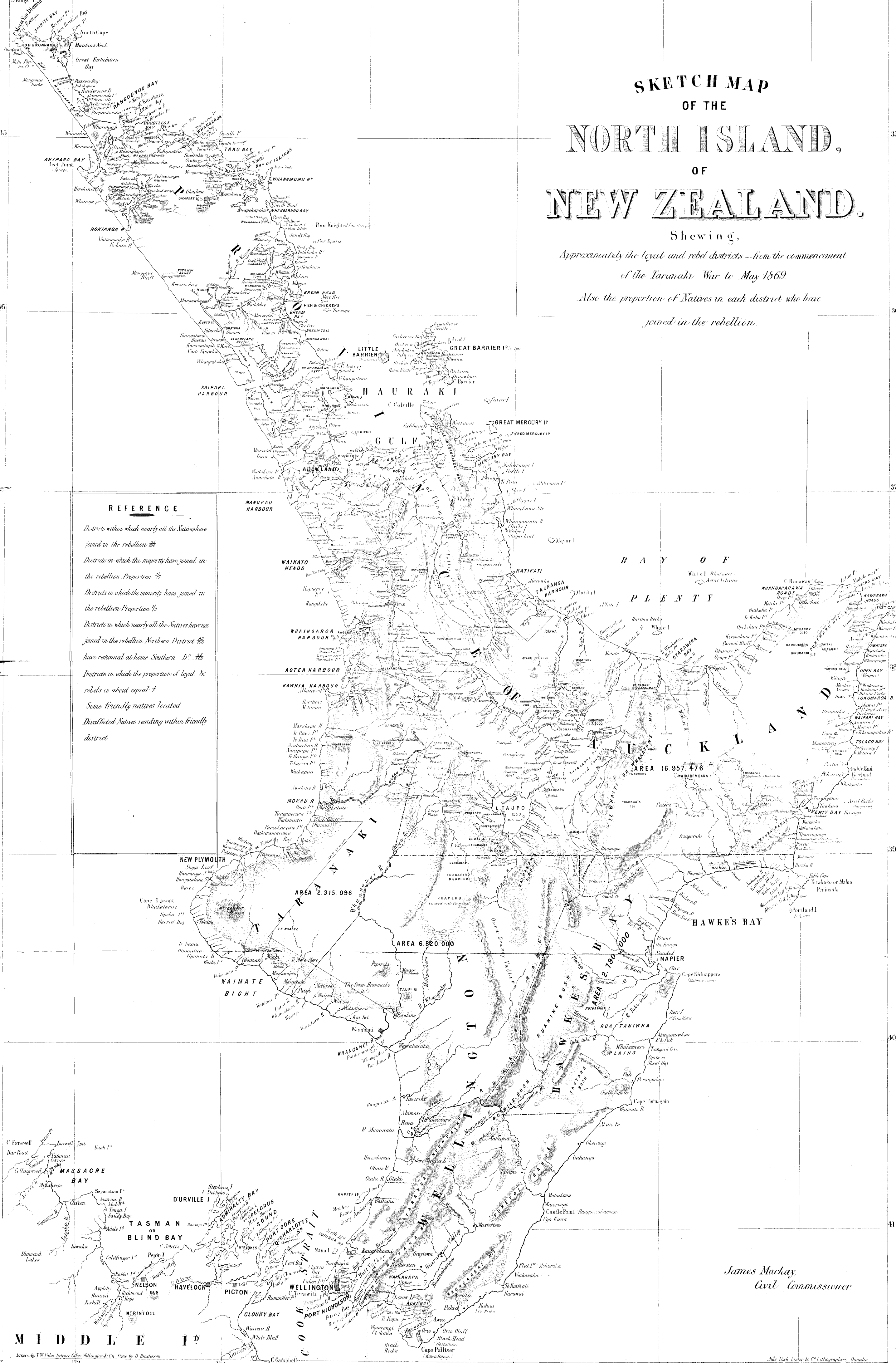
Locality and Extent of Land Confiscated	Area
In the Waikato including Military Settlements	about 1 212 257
At Tauranga including Mayor I & part of Motiti I to be set apart for Natives	245 500
In the Bay of Plenty (Otago) about	420 000
In Hawkes Bay Province about	356 560
In Taranaki & Wellington Provinces exclusive of original Settlements	1 620 696
<b>Total</b>	<b>3 854 053</b>





# SKETCH MAP OF THE NORTH ISLAND, OF NEW ZEALAND.

Shewing,  
*Approximately the loyal and rebel districts—from the commencement  
of the Taranaki War to May 1869.*  
*Also the proportion of Natives in each district who have  
joined in the rebellion.*



### REFERENCE.

- Districts within which nearly all the Natives have joined in the rebellion*
- Districts in which the majority have joined in the rebellion Proportion  $\frac{2}{3}$*
- Districts in which the majority have joined in the rebellion Proportion  $\frac{1}{3}$*
- Districts in which nearly all the Natives have not joined in the rebellion Northern District  $\frac{2}{3}$*
- have remained at home Southern D<sup>o</sup>  $\frac{2}{3}$*
- Districts in which the proportion of loyal & rebels is about equal  $\frac{1}{2}$*
- Some friendly natives located*
- Disaffected Natives residing within friendly district*

MANUKAU HARBOUR

WAIKATO HEADS

WHANGAROA HARBOUR

AOTEA HARBOUR

KAWHIA HARBOUR

MOKAU

NEW PLYMOUTH

AREA 2 315 096

AREA 6 820 000

WAIMATE BIGHT

TAUPO

BAY OF PLENTY

TARANAKI HARBOUR

WAIKAREMOATA BAY

WAIKAREMOATA BAY

WAIKAREMOATA BAY

WAIKAREMOATA BAY

WAIKAREMOATA BAY

WAIKAREMOATA BAY

WAIKAREMOATA BAY

WAIKAREMOATA BAY

WAIKAREMOATA BAY

WAIKAREMOATA BAY

WAIKAREMOATA BAY

WAIKAREMOATA BAY

WAIKAREMOATA BAY

WAIKAREMOATA BAY

WAIKAREMOATA BAY

WAIKAREMOATA BAY

WAIKAREMOATA BAY

WAIKAREMOATA BAY

WAIKAREMOATA BAY

WAIKAREMOATA BAY

WAIKAREMOATA BAY

WAIKAREMOATA BAY

WAIKAREMOATA BAY

WAIKAREMOATA BAY

WAIKAREMOATA BAY

WAIKAREMOATA BAY

WAIKAREMOATA BAY

WAIKAREMOATA BAY

WAIKAREMOATA BAY

WAIKAREMOATA BAY

WAIKAREMOATA BAY

WAIKAREMOATA BAY

WAIKAREMOATA BAY

WAIKAREMOATA BAY

WAIKAREMOATA BAY

WAIKAREMOATA BAY

WAIKAREMOATA BAY

WAIKAREMOATA BAY

James Mackay  
Civil Commissioner

